

Hyperlink:  
please  
ctrl/click on  
the photo to  
access the  
file through  
Asset Bank.



Indonesia, 2018

2<sup>nd</sup> October 2018

## ShelterBox Operations Update

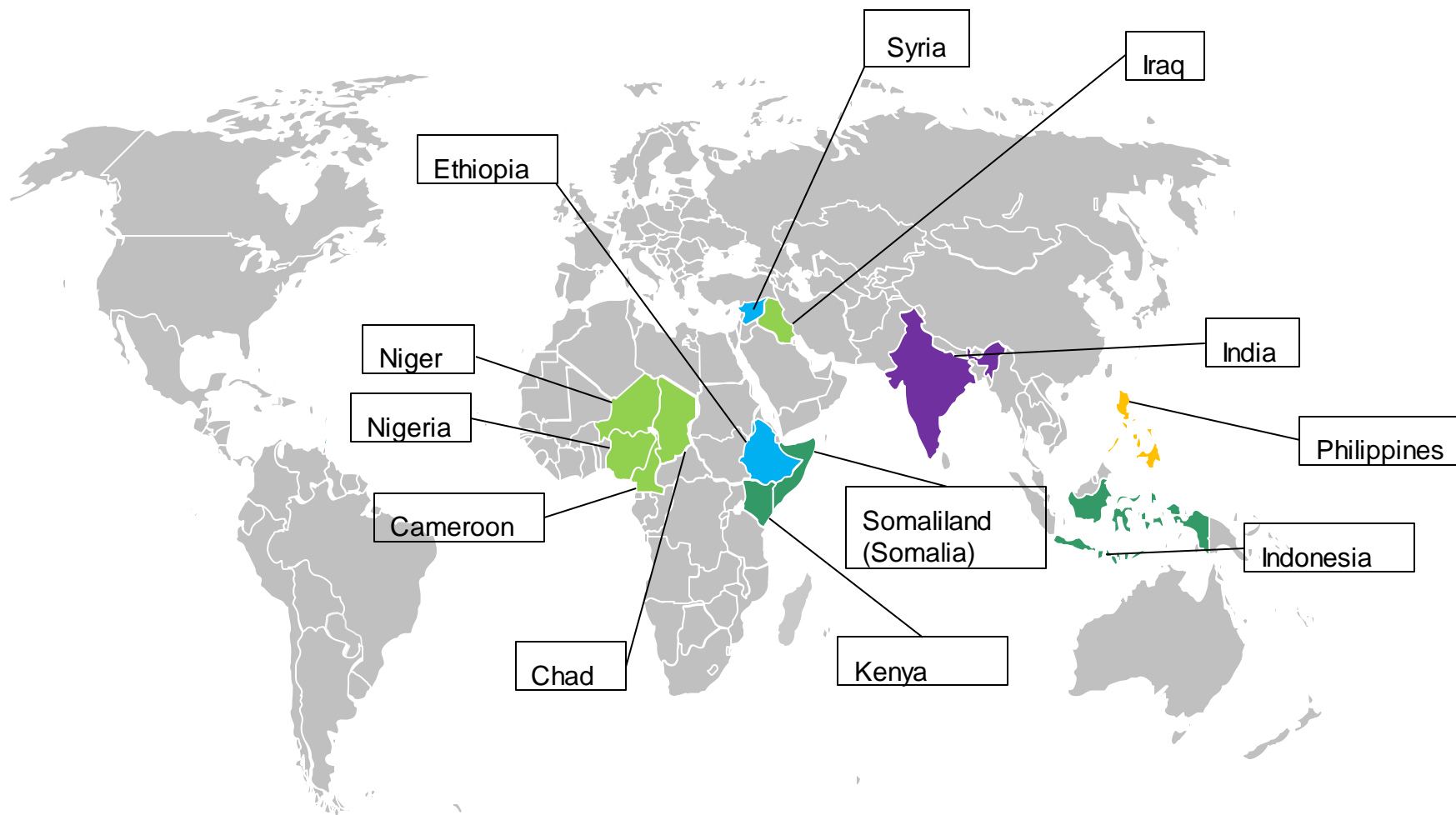
ShelterBox and Rotary are project partners in international disaster relief.  
ShelterBox is a Charity, independent of Rotary International and The Rotary Foundation. Charity No. 1096479.



**ShelterBox**



# Operations Update



## Key

- Assessment team deployed
- Active: SRTs responding
- Remote Distributions
- Complete
- Project Planning





# Philippines – Super Typhoon Mangkhut

## Overview:

On 15<sup>th</sup> September 2018, Typhoon Mangkhut, known locally as Ompong, made landfall at 01:40 in Baggao, Cagayan Province, northern Philippines as a category 5 typhoon (Fig. 1). On landfall, sustained wind speeds of 200 km/h, gusting 285 km/h, were recorded, along with a storm surge of 3-4 m. The weather system was almost 900 km in diameter.

**As more areas are becoming accessible, the number of people affected is growing substantially. On the 30<sup>th</sup> September, the Philippines' Department of Social Welfare and Development reported that nearly three million people have been affected, with 201,636 homes damaged or destroyed. The agriculture and mining sectors have been severely affected by the typhoon.**

The Philippines is ShelterBox's most 'deployed to' country to date, with this being our 25<sup>th</sup> Deployment since 2004. The last deployment was in May 2018, in response to flooding after Tropical Storm Kai-Tak (Urduja). Households on Biliran Island received a mixture of shelterkits, tents and NFIs.

## Status of ShelterBox Response:

**All teams are now in the north of Luzon, where they have been meeting with Rotary contacts and community leaders, alongside conducting needs assessments in some of the heavily affected areas. The needs assessments have illustrated a need for shelter in many communities, however, the damage is very broad across communities. Most communities have a mixture of intact, partially-damaged and totally-destroyed houses.** We hold prepositioned stock in the warehouse in Cebu which includes shelter kits plus CGI and other non-food items (NFIs) for 2000 households.



Philippines, 2018 – responding to Typhoon Mangkhut

# India – Flooding

**The decision has been made to not deploy aid to Kerala, due to several factors.**

## Overview:

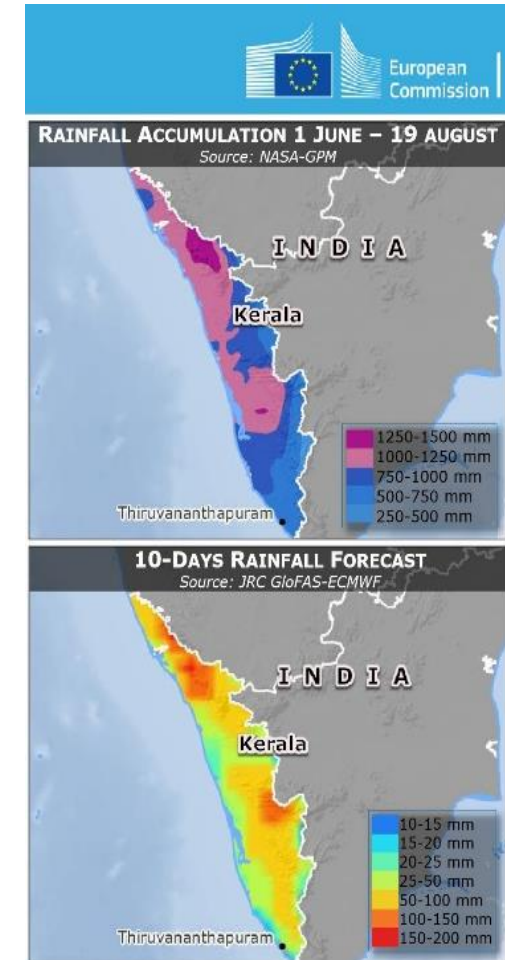
Heavy rainfall between 8 and 14 August caused flooding and landslides in Kerala state, in southwest India. According to the government, this is the worst flooding and landslides on record since 1924. The monsoon season is expected to continue until the end of September, during which further adverse weather can be expected. The Government has reported that as of 13<sup>th</sup> September, 498 people have lost their lives in Kerala due to the severe flooding.

Although people have started returning to their homes, nearly 540,000 people remain in relief camps. The immediate priorities for relief measures are health, hygiene, drinking water access and shelter. Reports state that water sources are contaminated, and outbreaks of disease have been increasing in some areas. As floods continue to subside, the extent of the damage is significant. According to the state government, over 50,000 homes have been damaged and 7000 homes have been destroyed. Damage was also caused to roads and infrastructure (bridges in particular).

Previous responses to India: Earthquake (2001) and Tsunami (2005).

## Status of ShelterBox Response

**Both teams have returned from India. Whilst in India, the logistics/procurement team met with potential suppliers and investigated the customs and procurement procedures in India. The field team conducted field visits and have obtained valuable information regarding the local need and the appropriateness of ShelterBox aid. With this information, the decision has been made not to deploy aid to Kerala. For more information or for external communications, please refer to the approved messaging on the [News Resource](#).**



Map of flooding in Kerala, India –  
European Commission



# Indonesia – Lombok Earthquakes

## Overview:

Since the first major earthquake at magnitude 6.4 on 29 July 2018, which was followed by magnitude 7.0 (5 August 2018), magnitude 6.5 (19 August 2018 afternoon) and magnitude 6.9 (19 August 2018 evening), there have been 506 fatalities, 431,416 displaced people and damage to 74,361 houses.

Houses in North Lombok and East Lombok that were only slightly damaged by the first earthquakes suffered more serious structural damage, and in a number of cases, collapsed following later earthquakes. Many people remain displaced from their homes, either because of structural damage or fear of aftershocks.

## Status of ShelterBox Response:

**Alongside Rotary, our teams in Indonesia have now distributed ShelterBoxes to 658 households (HH) and conducted training alongside distributions. We have also distributed and erected 14 tents to replace maternity and post-natal clinics destroyed by the earthquakes. Distributions now total 672 boxes.**

**All boxes have now been distributed (as of 27<sup>th</sup> September) and the distribution team have now returned.**

The M&E team are still on Lombok, conducting beneficiary interviews and post-distribution monitoring (PDM) surveys.



Indonesia, 2018

# Ethiopia: Conflict

**Overview:** ShelterBox is working to respond to displacement in the Guji-Gedeo Zones:

Violence between communities on the border of the SNNPR and Oromia Regions in southern Ethiopia started in April. In August 2018, a total of 958,175 individuals were identified as having been displaced due the Gedeo-Guji conflict.

Influx of IDPs in some areas nearly doubled population. Prior to the new displacement, this area was already one of the most densely populated parts of the country. Humanitarian needs are WASH, food, shelter, NFI, nutrition, education, and protection. As mentioned above, thousands of people are displaced into crowded and unsuitable collective centres in public buildings. Other people are sleeping outside, with little or no protection from the weather.

It is now rainy season in Ethiopia and the Kiremt Rains began in June. Alongside impacting the IDPs in the Guji-Gedeo zones, flooding is predicted to displace an additional 1.2 million people in southern Ethiopia.

## Status of ShelterBox Response

We have an MOU with IOM (International Organisation for Migration) for phase one of our response, whom we are currently working through remotely to help 2000HH.

**Despite, heavy rain and security issues, distributions have now been completed with 1995 HH receiving aid.**



Ethiopia, 2018



# Kenya: Flooding

## Overview:

According to UNOCHA, 800,000 people are estimated to be affected by the flooding and 291,171 people were displaced.

The 2018 March to May rains were the heaviest in the past 55 years, with some areas receiving twice the seasonal average. Flood waters took weeks to recede making many areas difficult to access for a long time.

## Status of ShelterBox Response

An MoU with the Kenyan Red Cross Society (KRCS) is in place, however, Kenya has a strict ban on plastic bags which has led to some questions over the importation of SB kit, some of which is wrapped in plastic. Teams deployed to both Belgium and Dubai in July to remove single use plastics from aid items destined for Kenya.

To date 647 HH have received SB aid and the distributions in Khalifi are now complete.

**Additional KRCS volunteers have been trained and distributions have begun in Tana River County. So far, 593 HH have received aid. The team are unable to attend all of the distributions due to security concerns, therefore some distributions are KRCS only.**

**A total of 1,240 HH in Kenya have received aid so far.**



Kenya, 2018

# Somaliland - Drought

**Overview:** Somaliland has 2 rainy seasons, April – June and October - November. The last rainy season was below average for the fourth consecutive season.

The majority of rural communities in Somaliland are nomadic pastoralists. Extreme weather is the biggest threat to pastoralists, with 85% livestock lost in 2017. The continuing drought has forced communities to move increasingly large distances to seek fresh food for their animals. As a consequence, these communities are now displaced and destitute.

## Status of Response:

Project 1: Distributions supporting 441 households – Completed.

Project 2: Distributions supporting 1000 households – Completed.

Project 3: Will support 2,000 households

- Distributions for phase 1 (420 HH) are now complete.
- **Distributions for phase 2 (420HH) – expected to be conducted whilst a SB team is in country.**

Project 3 includes tarpaulins, ropes and NFI kits. This package has changed since project 1 thanks to feedback received from the post-distribution monitoring (PDM). Midi tents will be included in phase 2.

We have a team of two currently in Somaliland to discuss the current/future projects with ActionAid.

- **Partner:** Action Aid



Somaliland, 2018



# Cameroon, Chad and Niger – Lake Chad Basin Crisis

## Overview:

The crisis in the Lake Chad Basin stems from an insurgency by the Islamist militant group, Boko Haram, that began almost a decade ago in North East Nigeria. Over time, the conflict spread to Niger, Cameroon, and Chad. The UN estimates that around 10.7 million people in the region are currently in need of relief aid, with just over 2 million displaced from their homes, either within their countries of origin or across borders into neighbouring states.

A Multi National Joint Task Force, formed to combat Boko Haram, was set up in 2015. As this force has regained territory, previously inaccessible areas have opened up to humanitarian agencies. However, the response remains chronically underfunded and constrained by persistent insecurity.

This severe emergency has been exacerbated by underlying vulnerabilities such as underdevelopment, economic marginalisation, climate change and rapid population growth, all contributing to create these fragile communities. Rural communities were already at breaking point and Boko Haram activity has pushed them over the edge. This both fuels the uptake in BH recruits and exacerbates the impact of their actions.

Some of those displaced are living with host communities, some in managed camps, some in informal settlements. Even as people are newly uprooted, some are returning home but to areas where basic infrastructure is absent or destroyed and the ability to recover is extremely challenging.

To date (since 2015), we have supported over 11,000 households across Cameroon, Niger, Nigeria and Chad.



Source: Deutsche Welle

# Nigeria - Conflict



Nigeria, 2012

**Overview:** The conflict in North-East Nigeria is in its ninth year, and the devastating consequences continue to impact community structures and the local population, especially vulnerable groups such as women and children. The latest Humanitarian Situation Update for Nigeria states that there are 2,254,213 Internally Displaced Persons (IDPs) in the region (July 2018).

## **Status of response:**

Project 1 has distributed emergency kits and NFI kits to 765 households. The agreement for project two with ACTED has been agreed. This project will replicate project 1 but will target a total of 1130 HH (6,780 people assuming 6 people per household). ACTED's procurement for this project is ongoing.

**Objective:** Providing emergency shelter assistance to internally displaced persons.

**Partner:** ACTED



# Cameroon - Conflict

**Overview:** ShelterBox has been responding to this crisis in Cameroon since 2015. The objective of the ShelterBox response in Cameroon is to support people displaced by the Boko Haram insurgency, both refugees and IDPs (Internally Displaced Persons). Through the support of emergency and temporary shelter, the aim of the response is to improve the physical and psychological wellbeing of those affected by the crisis.

**Status of Response:** Since 2015, ShelterBox has been supporting remote distributions in Cameroon with the help of our in-country partner, IEDA Relief. Distributions have focussed on Minawao refugee camp and IDPs just outside the camp.

Final distributions of the 2017-18 project have now been completed – **In September 699 HH (2846 beneficiaries) received aid – many were NFI only distributions.** The total figures of shelter items distributed are displayed in the table below. In addition to this we also provided hygiene kits and NFIs. The next project agreement is under discussion with IEDA.

	Tents	Shelter Kits	Semi-permanent shelters
2017-18	1,700	500	1,850
TOTAL Remaining	0	0	0

**Partner:** IEDA Relief



Cameroon, 2018

# Chad - Conflict

**Overview:** Chad is facing a multifaceted displacement crisis, with Nigerian refugees entering from the South, Central African and South Sudanese refugees from the East. In addition to this, Chadian refugees are returning from Central African Republic and there is also huge displacement caused by the Boko Haram insurgency in Northern Nigeria and its surrounding borders. According to IOM, there are 123,204 displaced persons in the region and an additional 51,000 IDPs that have returned to their communities of origin.

## Status of response:

- Phase 1: Distributions complete supporting 441 households.
- Phase 2: Distributions completed supporting 1000 households.
- Phase 3: Distributions are now complete, with 850 households supported in Part A; and 1100 households supported in Part B.
- ICAHD Have completed the Post Distribution Monitoring (PDM) and we are currently analysing the results.

A team of two from SB HQ deployed to Chad in June and worked closely with our partner ICAHD to review the project. They also carried out Train the Trainer sessions on UN spec tents and assessed local procurement and logistics systems alongside ICAHD.

The Chad supply chain capacity assessment has been completed and the details are being analysed.

**Partner:** ICAHD



Chad, 2018



# Niger – Conflict

**Overview:** The security situation has deteriorated in the months of June and July (2017) due to terrorist attacks targeted at the local population. This has resulted in the closure of an IDP camp in Kablewa, causing further displacement for 16,000 people. Half of the households in Diffa have been affected by population movements.

## Status of Response:

Project 1 - In total 896 households have benefited from the project. The response was split over two phases - each supporting 448 households. All distributions are now complete.

## Next Steps:

Project 2 – Phase 1: 1,329 HHs were distributed to between 21st – 24th June in the following locations in the Diffa region of south east Niger: Kintchandi, Kablewa and Boudouri.

Project 2 - Phase 2: 1,189 HH - distributions started on 5<sup>th</sup> September and are now complete.

**Aid:** The aid for both aforementioned projects includes tarpaulins (4x6) and NFIs (kitchen sets, mosquito nets, jerry cans, solar lights, blankets).

**Partner:** Plan International Niger



Niger, 2018

# Syria – Ongoing Displacement

**Overview:** The Syrian crisis is now in its 8th year. In 2018 it is estimated that over 13 million people (that's around 70% of the population) in Syria are in need of humanitarian assistance, 5.1 million of these people are in acute need and more than 6 million are internally displaced. Whilst a reduction in hostilities in some areas of Syria has been noted in 2018, hostilities have risen in others.



Syria, 2018

**Status of Response:** This is a remote distribution. ShelterBox is working with in-country partners to respond to this continuing crisis. Ongoing distributions continue. In total, SB has supported over 45,000 HHs displaced by the war in Syria.

**Partners:** (1) Hand in Hand (2) Relief Aid (3) Bahar

**Recently distributed:**

**Hand in Hand:** A project targeting 1100 HH with Flex 3 tents and NFIs was designed to target new arrivals. Due to complex factors, these tents have not been accepted by the affected population, partially due to the availability of damaged buildings. We have therefore reduced this number to 300 tents.

**Bahar:** A new project to distribute 300 AMG tents and 300 NFI kits has been agreed and discussions are ongoing.

**ReliefAid:** We are currently planning for a winter response.



# Iraq – Conflict

**Overview:** In October 2016 the Iraqi federal government, supported by Kurdish regional government forces and government affiliated militias, launched an offensive to recapture the city of Mosul. On Monday July 10th the Iraqi Prime Minister officially declared “victory” in the battle for West Mosul – the last remaining pocket of ISIS resistance in the city. On 9 December 2017 the Iraqi Prime Minister announced total victory over Islamic State in Iraq. However, it is important to note that the end of the battle does not mean the end of the humanitarian response.

**Status of response:** Since the start of the Mosul offensive in October 2016, ShelterBox has provided assistance to more than 8,000 households (over 40,000 individuals) via implementing partners. Note these figures include some NFI (other essential aid such as blankets, buckets, cooking kits etc.) only distributions.

The majority of aid held with ACTED has been distributed (most recently Kerosene heaters and fuel) – a total of 1,297 kerosene heaters (and fuel).

A project targeting families in the Kirkuk Governorate of northern Iraq has been agreed. The project will support 528 households who are returning home, with the aid package including NFI kits and Sealing Off Kits. This is a very volatile region so security is a serious concern.

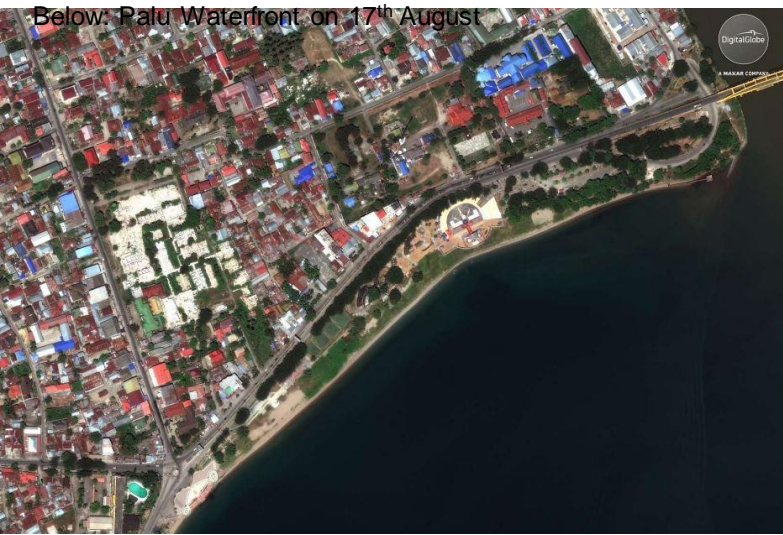
## Partners:

- ACTED: Variety of shelter and NFIs.
- BRHA: UNHCR spec tents.
- Unnamed partner: Tarpaulins.

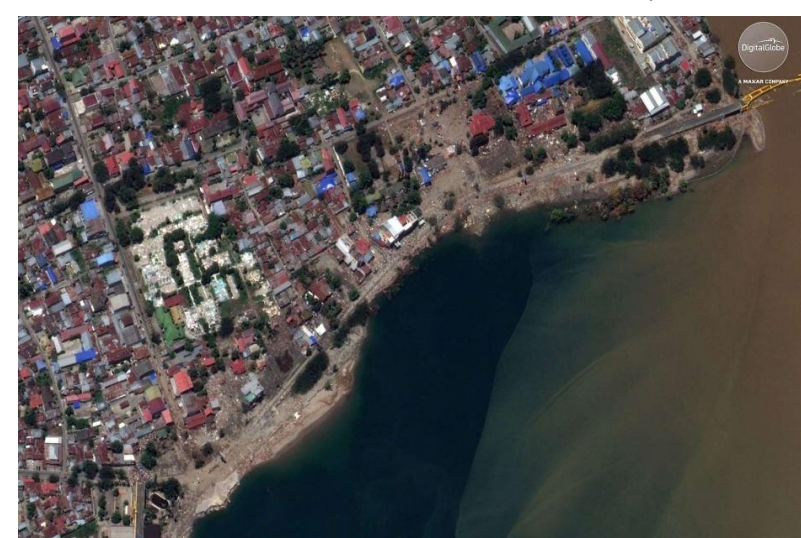


Iraq, 2016

# Monitoring



Below: Palu Waterfront on 1<sup>st</sup> October after the Earthquake and Tsunami



Location	Event	Focal Points	Status	Next Action/Trigger
<b>Country of event</b>	Cause of potential need	Ops focal points	Brief overview of current event/impacts	Current actions taken by SB Operations
<b>Indonesia</b>	Earthquake and consequent Tsunami on Sulawesi Island	Jack Bailey	On 28 <sup>th</sup> September, a 7.5 magnitude hit the island of Sulawesi in northern Indonesia, creating a Tsunami which hit the city of Palu. As of 1 <sup>st</sup> October, reports indicate that 1,200 people are already reported to have died, with 42,000 displaced. Access is severely constrained by landslides etc. so these numbers are expected to rise. Our teams on Lombok were unaffected and we are now planning to send an assessment team to Indonesia. For more information, see our approved messaging: <a href="https://shelterboxtrust.sharepoint.com/:w/s/thenewsresource/Eel9M_zTIFILm0F-Ee6KNrAB_QSRtDpAMQ9MlaftbMAZKA?e=MZ5S5G">https://shelterboxtrust.sharepoint.com/:w/s/thenewsresource/Eel9M_zTIFILm0F-Ee6KNrAB_QSRtDpAMQ9MlaftbMAZKA?e=MZ5S5G</a>	Monitoring from HQ and speaking with contacts in Indonesia to clarify the situation and assess the feasibility of a SB response.
<b>Nigeria</b>	Flooding	Céline Chhea	Parts of Nigeria have experienced heavy rain and flooding, damaging thousands of homes and displacing thousands of people. Flood waters are still high so the extent of damage etc. is currently unknown.	Monitoring from HQ.
<b>Greece (Lesvos)</b>	Population Displacement	Sam Hewett	Contact was made by an NGO via ShelterBox Germany, highlighting the situation of asylum seekers on Lesvos island in Greece. No action is being taken at this time due to commitments to ongoing responses	Monitor and review as more capacity becomes available
<b>Venezuela/ Colombia/ Ecuador/ Peru</b>	Population Displacement	Beth Simons	Currently, emergency shelter needs are at border towns where people are transiting through, therefore a ShelterBox response is not appropriate at this time.	Continue to monitor from HQ and liaise with our contacts in the area.
<b>Cameroon</b>	Crisis in the SW and NW	Jo Arponen	Due to several factors, such as the upcoming Presidential elections in October, we will be unable to respond at this time.	We will continue to monitor from HQ.
<b>Sudan</b>	Conflict	Beth Simons	A deployment to Sudan was being planned, however, due to operational capacity this has been put on hold.	Continuing to monitor from HQ.

The city of Palu, Indonesia - 2018 – ABC News

<http://www.abc.net.au/news/2018-10-02/satellite-images-before-and-after-indonesia-tsunami/10328562>